



Noise Monitoring Result

Day Time (0700 - 1900hrs on normal weekdays)

Location: M1a - Footbridge at EX-Wanchai Harbour Road Sports Centre

Date	Time	Weather	Measurement Noise Level			Baseline Level	Construction Noise Level	Limit Level
			Leq	L10	L90	Leq	Leq	Leq
Unit: dB(A), (30-min)								
4/8/2017	14:45	Cloudy	82.2	84.7	77.5	72	82	75
7/8/2017	13:15	Fine	76.1	78.0	73.5	72	74	75
17/8/2017	09:55	Fine	76.1	78.5	72.4	72	74	75
25/8/2017	09:45	Fine	75.0	76.6	72.8	72	72	75

Location: M2b - Noon-day gun area

Date	Time	Weather	Measurement Noise Level			Baseline Level	Construction Noise Level	Limit Level
			Leq	L10	L90	Leq	Leq	Leq
Unit: dB(A), (30-min)								
1/8/2017	13:45	Fine	67.6	68.9	65.9	68	68	75
7/8/2017	14:20	Fine	69.6	71.7	66.4	68	65	75
17/8/2017	10:50	Fine	69.3	71.9	65.8	68	64	75
25/8/2017	11:10	Fine	68.3	70.9	65.2	68	60	75

Location: M3a - Tung Lo Wan Fire Station

Date	Time	Weather	Measurement Noise Level			Baseline Level	Construction Noise Level	Limit Level
			Leq	L10	L90	Leq	Leq	Leq
Unit: dB(A), (30-min)								
1/8/2017	14:25	Fine	64.6	66.1	62.7	69	65	75
8/8/2017	09:30	Fine	69.0	70.1	67.4	69	56	75
17/8/2017	13:55	Fine	65.2	66.2	63.1	69	65	75
24/8/2017	13:25	Fine	65.1	66.8	63.4	69	65	75

Location: M4b - Victoria Centre

Date	Time	Weather	Measurement Noise Level			Baseline Noise Level	Construction Noise Level	Limit Level
			Leq	L10	L90	Leq	Leq	Leq
Unit: dB(A), (30min)								
1/8/2017	10:35	Fine	66.3	67.5	65.0	67	66	75
7/8/2017	15:15	Fine	65.8	67.0	64.3	67	66	75
17/8/2017	14:35	Fine	64.8	66.2	63.1	67	65	75
24/8/2017	14:05	Fine	66.2	67.8	64.2	67	66	75

Location: M5b - City Garden

Date	Time	Weather	Measurement Noise Level			Baseline Level	Construction Noise Level	Limit Level
			Leq	L10	L90	Leq	Leq	Leq
Unit: dB(A), (30min)								
1/8/2017	15:00	Fine	70.9	74.4	66.8	68	68	75
8/8/2017	10:10	Fine	73.0	75.2	70.6	68	71	75
17/8/2017	15:10	Fine	72.2	73.7	70.4	68	70	75
24/8/2017	14:50	Fine	71.0	72.3	69.5	68	68	75

Location: M6 - HK Baptist Church Henrietta Secondary School

Date	Time	Weather	Measurement Noise Level			Baseline Level	Construction Noise Level	Limit Level
			Leq	L10	L90	Leq	Leq	Leq
Unit: dB(A), (30-min)								
1/8/2017	15:35	Fine	65.9	67.1	64.4	71	66	70
8/8/2017	10:50	Fine	67.3	68.5	64.7	71	67	70
17/8/2017	15:45	Fine	67.2	68.4	65.9	71	67	70
24/8/2017	15:30	Fine	64.7	66.1	63.1	71	65	70



Noise Monitoring Result

Day Time (0700 - 1900hrs on normal weekdays)

Location: M7e - International Finance Centre (Eastern End of Podium) (Reference Station)

Date	Time	Weather	Measurement Noise Level			Baseline Level	Construction Noise Level	Limit Level
			Leq	L10	L90	Leq	Leq	Leq
Unit: dB(A), (30-min)								
31/7/2017	13:40	Fine	70.0	72.9	67.5	67	67	N/A
7/8/2017	10:15	Fine	69.4	70.5	66.4	67	66	N/A
14/8/2017	14:10	Fine	67.8	69.6	65.3	67	61	N/A
22/8/2017	14:55	Fine	66.8	68.1	64.7	67	67	N/A

Location: M7w - International Finance Centre (Western End of Podium)

Date	Time	Weather	Measurement Noise Level			Baseline Level	Construction Noise Level	Limit Level
			Leq	L10	L90	Leq	Leq	Leq
Unit: dB(A), (30-min)								
31/7/2017	14:15	Fine	66.0	67.5	63.7	69	66	75
7/8/2017	10:50	Fine	65.9	68.0	63.5	69	66	75
14/8/2017	14:45	Fine	65.2	66.8	63.2	69	65	75
22/8/2017	14:20	Fine	65.1	66.3	63.6	69	65	75

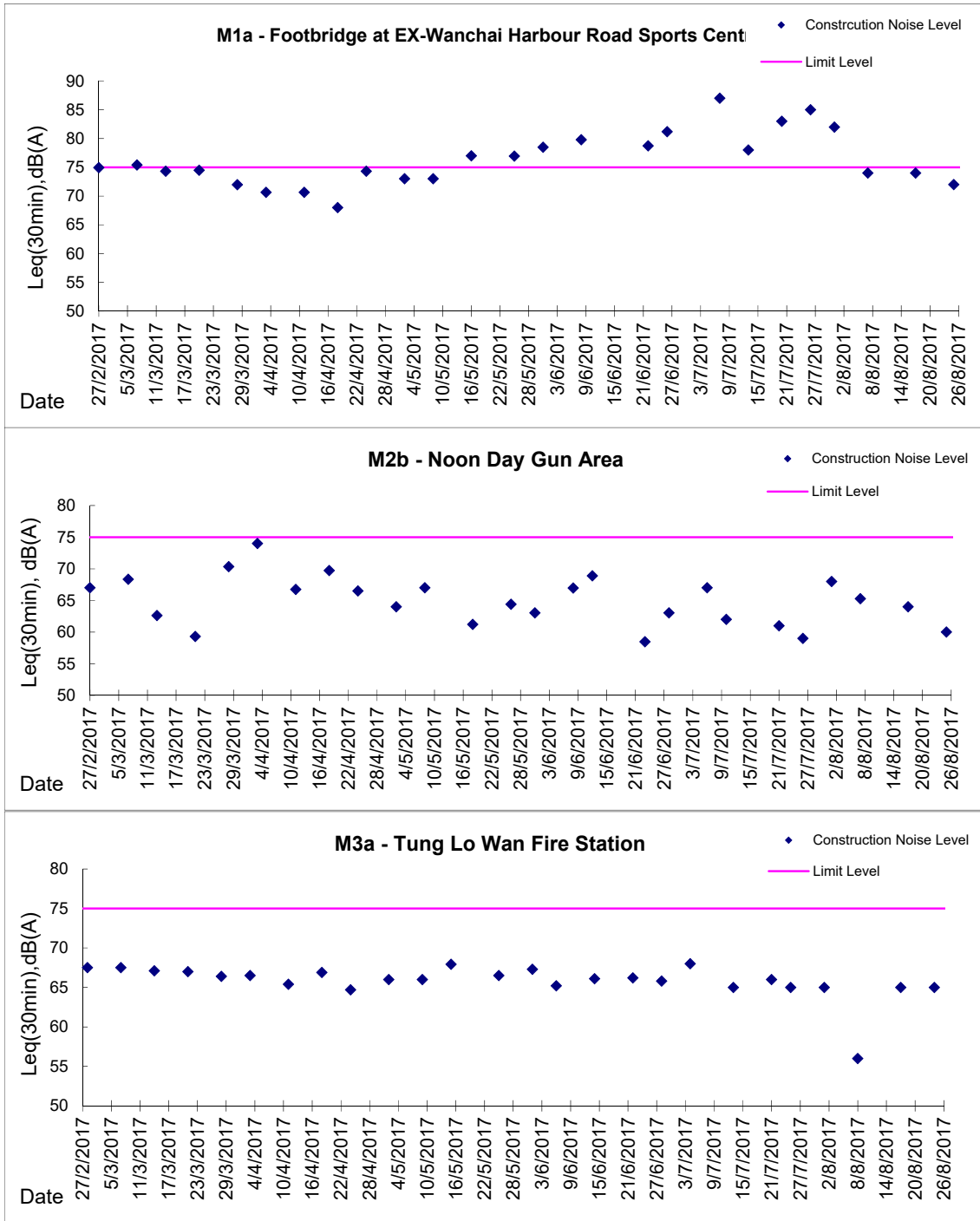
Location: M8 - City Hall

Date	Time	Weather	Measurement Noise Level			Baseline Level	Construction Noise Level	Limit Level
			Leq	L10	L90	Leq	Leq	Leq
Unit: dB(A), (30-min)								
31/7/2017	15:00	Fine	58.3	60.0	55.8	64	58	70
7/8/2017	11:30	Fine	58.9	60.6	55.6	64	59	70
14/8/2017	15:40	Fine	58.0	59.7	55.5	64	58	70
24/8/2017	10:45	Fine	60.2	62.7	56.3	64	60	70



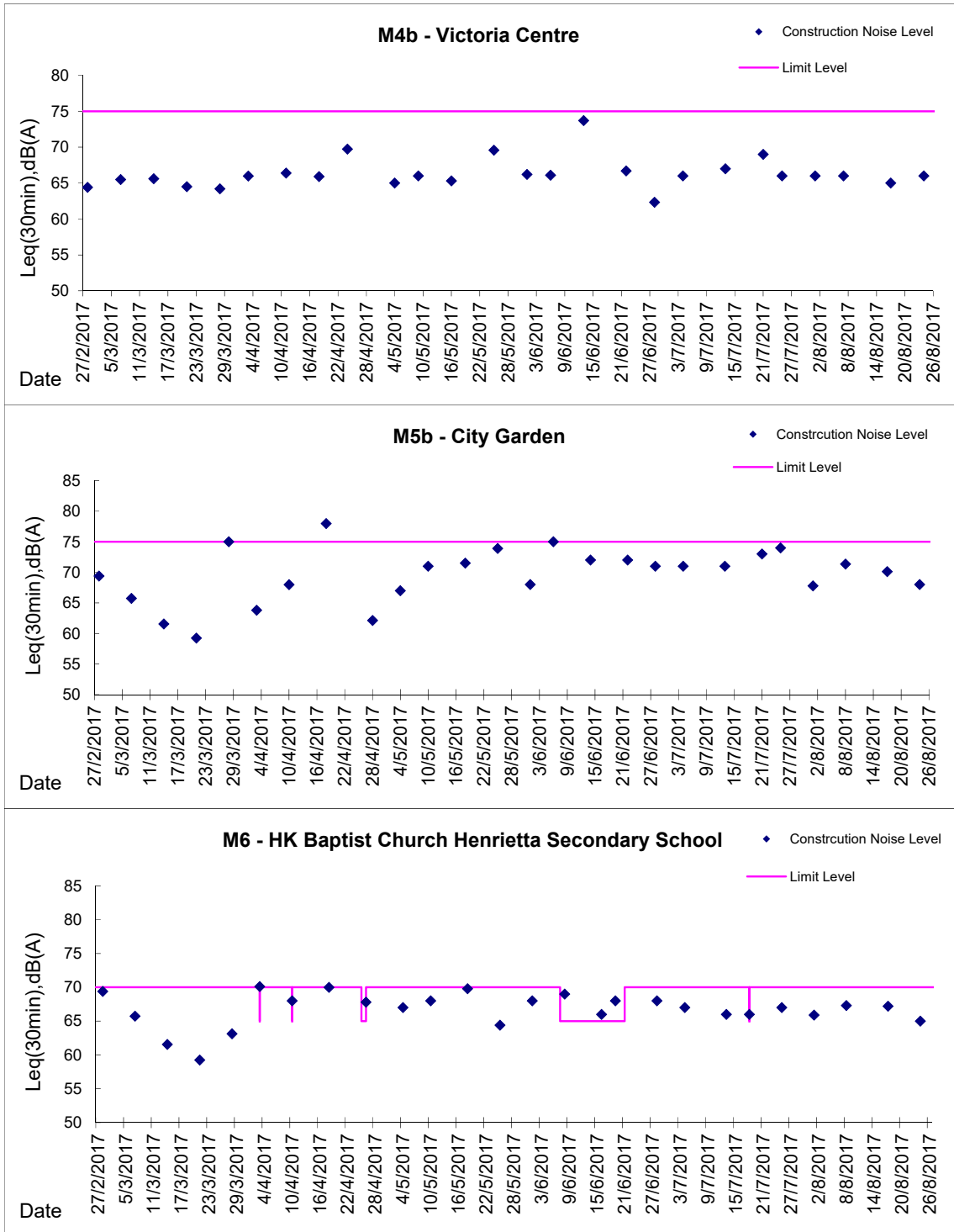
Graphic Presentation of Noise Monitoring Result

Day Time (0700 - 1900hrs on normal weekdays)



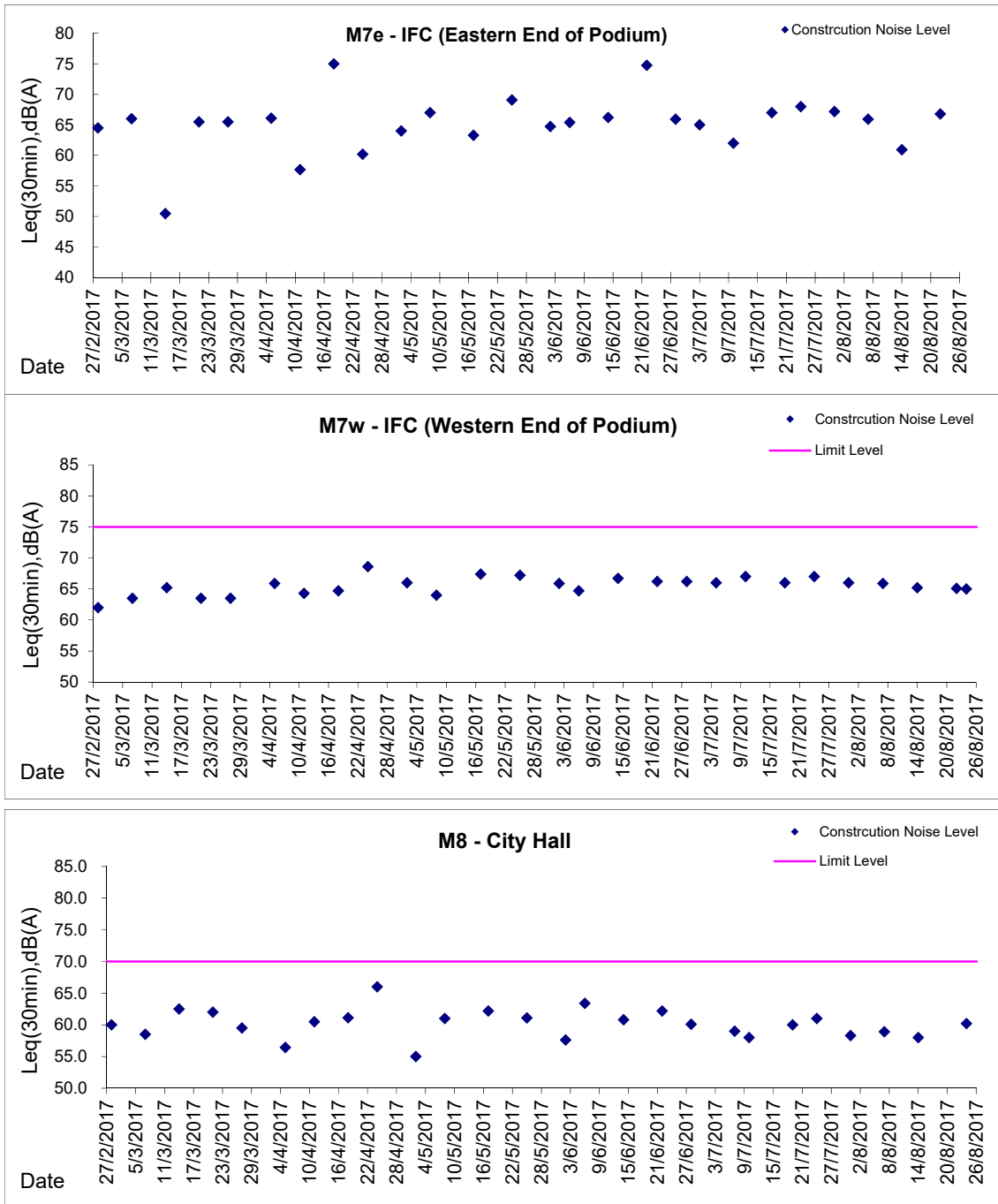
Graphic Presentation of Noise Monitoring Result

Day Time (0700 - 1900hrs on normal weekdays)



Graphic Presentation of Noise Monitoring Result

Day Time (0700 - 1900hrs on normal weekdays)



* Remark: M7e - IFC (Eastern End of Podium) is a reference monitoring station